



Flexifill™

The alternative to conventional backfill



The fill that leaves no gaps

Flexifill is a cost effective solution to your backfill problems. It saves you time and labor because it reduces the amount of excavation, equipment and requires no storage or removal of excess material. This versatile material is flowable, easy to place and self leveling. It fills all voids, leaving no gaps that will later cave in. Design mixes can vary based on your job specifications. *Flexifill* can be mixed for hand removal or for permanent placement. *Flexifill* can be used in the following applications.

Backfill for:

- Sewer Trenches
- Excavations
- Utility Trenches
- Abutments

Structural Fill for:

- Street Cuts
- Sub Footings
- Floor Slab Base
- Pipe Beddings
- Undercuts

Other Applications:

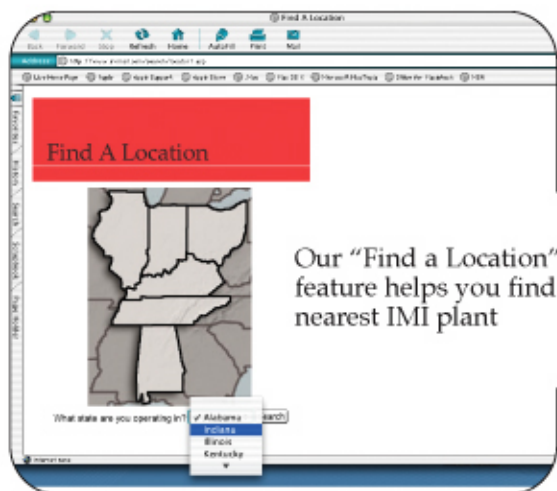
- Abandoned Sewers
- Underground Storage Tanks
- Slope Stabilization
- Soil Erosion
- Mud Mats

Purchasing imix™ products

When you purchase concrete from IMI, you have the assurance of a quality product. Our sales and technical staff are experts who can supply you with valuable information and advise you on the right concrete mix for your job.

To purchase concrete, contact sales for the plant nearest your location.

- Go to our web site: www.irvmat.com
- Click on the "Find a Location" feature
- Choose your state and then select either the city, county or zip code for your job
- Contact the sales staff for the plant nearest you



imi
Irving Materials, Inc.

www.irvmat.com

We're proud of our work